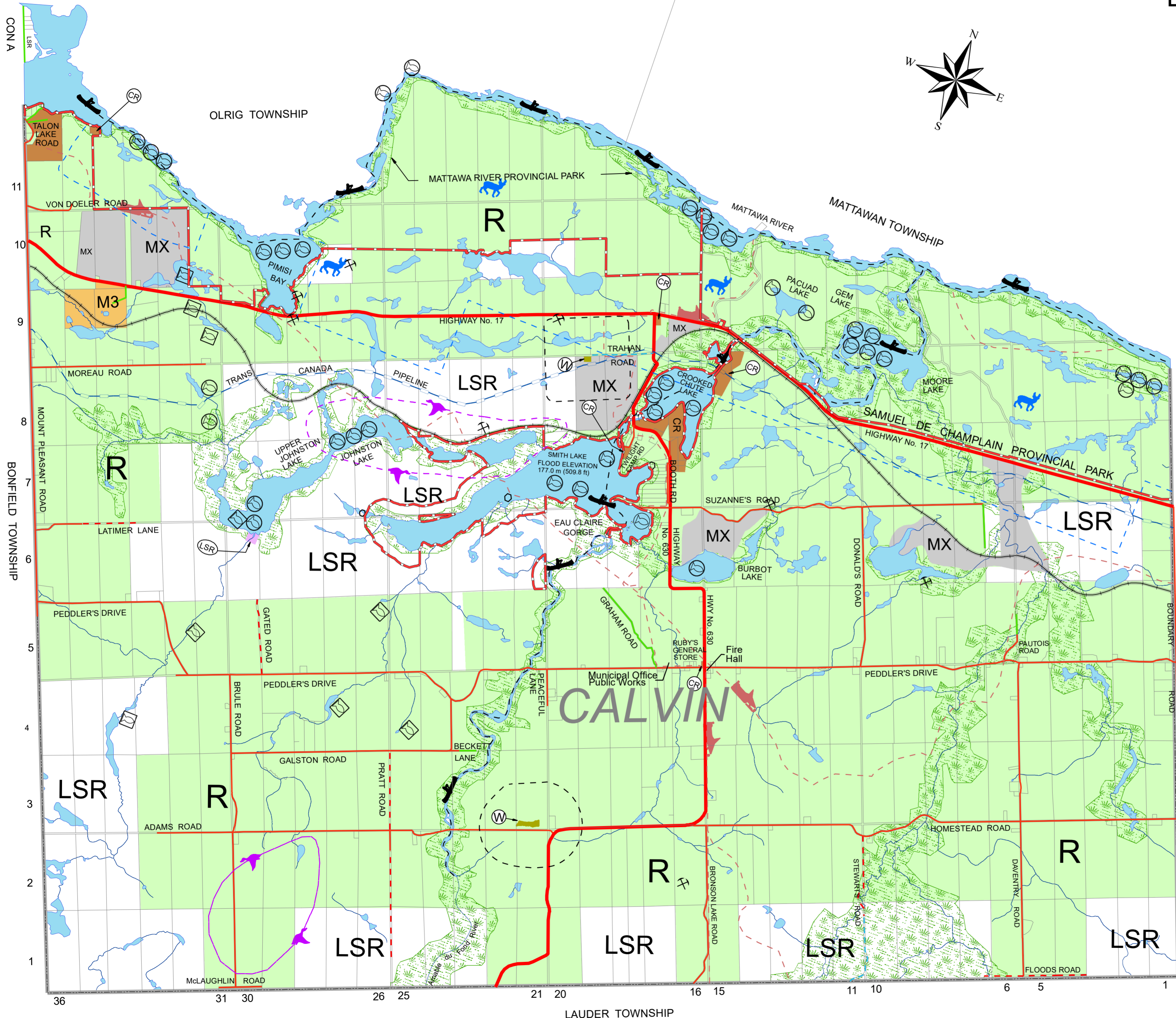
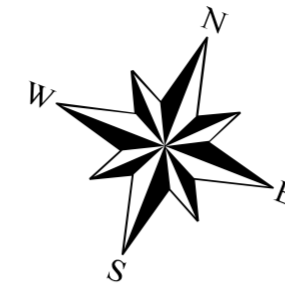


ZONING BY-LAW FOR THE EAST NIPISSING PLANNING AREA TOWNSHIP OF CALVIN

SCHEDULE "A" TO BY-LAW No.

January 2020

SCALE
0 1000 3000 metres



Legend

Natural Heritage Features

- Waterfowl Concentration Area
- Deer Yard
- Moose Wintering Area
- Moose Aquatic Feeding Area
- Warm Water Habitat
- Largemouth Bass
- Muskellunge
- Pike
- Smallmouth Bass
- Walleye
- Sturgeon
- Cold Water Habitat
- Atlantic Salmon
- Brook Trout
- Lake Trout
- Rainbow Trout
- Splake
- Brook Trout Spawning Area
- Heronry
- Osprey
- Loon

Transportation and Infrastructure Corridors

- Provincial Highway
- Township Roads (Yearly Maintained)
- Township Roads (Seasonally Maintained)
- Private Roads
- Resource Access Roads
- Unassumed Roads
- Rail Line
- Trans Canada Pipeline
- Snowmobile Trail

Zones

- R Rural
- LSR Limited Services Rural
- CR Commercial / Recreational
- M1 General Industrial
- M3 Heavy Industrial
- MX Mineral Aggregate Resource
- W Waste Management Facility
- 500m Influence Area
- Environmental Protection

Natural and Human Made Hazards

- Mine Hazard
- Flood Elevations: Specific Elevations Shown on Schedule

Other Features

- Canoe Trail
- Township Boundary